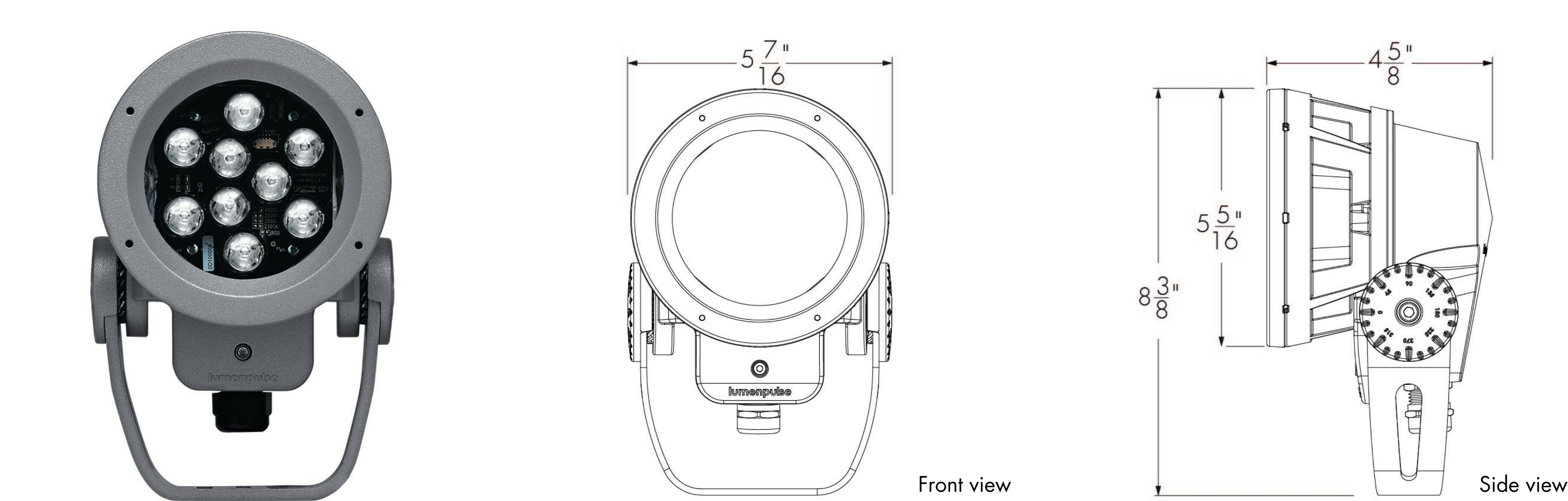


Project Name

Qty

Type

Catalog / Part Number

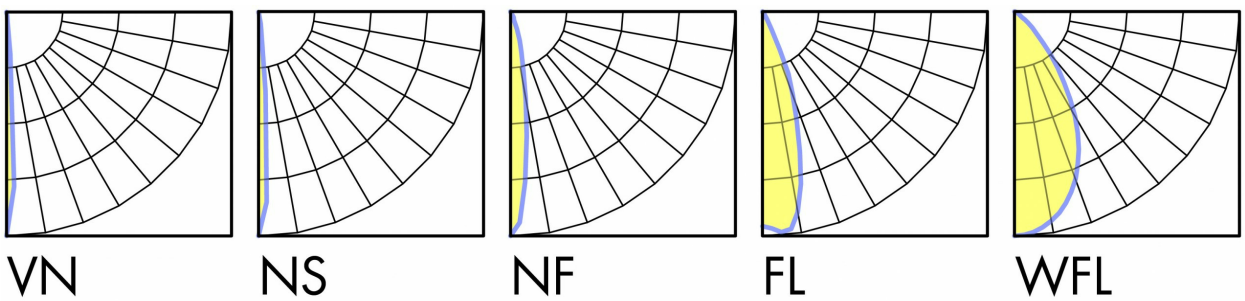


Photometric Summary

4000K	Delivered output (lm)	Intensity (peak cd)
VN	853	37,291
NS	750	23,839
NF	668	4,235
FL	639	1,770
WFL	660	664

Photometric performance is measured in compliance with IESNA LM-79-08.

Optics



Control

ON/OFF 0-10V DALI DMXrdm

Rating



Description

Features

Color and Color Temperature	2200K, 2700K, 3000K, 3500K, 4000K, 5700K, Red, Green, Blue
Optics (nominal distribution)	6°, 10°, 20°, 40°, 60°, Elliptical distribution on 10° to 40° optics
Optical Option	Linear spread lens horizontal distribution, Linear spread lens vertical distribution
Mounting Option	Stake Mounting, Knuckle Mounting, Canopy Cover Mounting
Options	3G ANSI C136.31 Vibration Rating for bridge applications, Corrosion-resistant coating for hostile environments
Power Consumption	14 W
Warranty	5-year limited warranty

Performance

Delivered Output	853 lm (4000K, VN optic)
Delivered Intensity	37,291 cd at nadir (4000K, VN optic)
Illuminance at Distance	Minimum 1 fc at 193 ft distance (4000K, VN optic)
Color Consistency	2 SDCM
Color Rendering	CRI 80+
Lumen Maintenance	L70 120,000 hrs (Ta 25 °C)

Physical

Housing Material	Low copper content high pressure die-cast aluminum
Yoke Material	Heavy aluminum
Lens Material	Clear tempered glass
Hardware Material	Stainless steel
Gasket Material	Silicone
Surface Finish	Electrostatically applied polyester powder coat
Weight	5.2 lbs
EPA	Front = 0.35 sq ft, Side = 0.31 sq ft

Electrical and control

Voltage	100 to 277 volts
Fixture Cable	Power and data in 1 cable, 3 ft cord standard (#16-5), other lengths available
Resolution (DMX/RDM)	Per fixture, 8-bit or 16-bit
Control	On/Off control, 0-10V dimming, DALI dimming, DMX/RDM enabled, Lumentalk system is enabled with LDB accessory - see typical wiring diagrams for details

Environmental

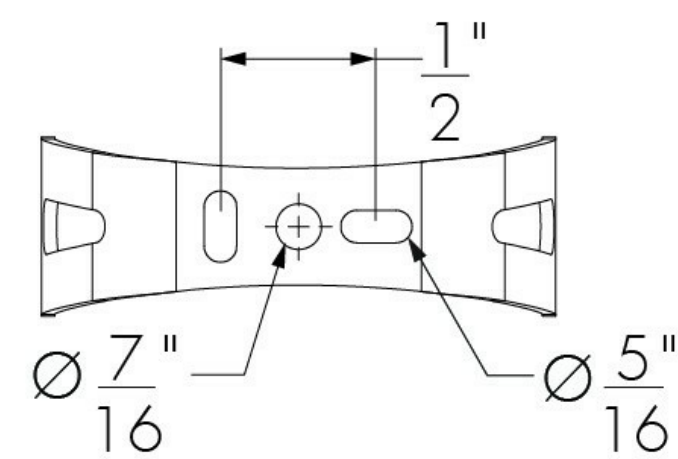
Operating Temperature	-13 °F to 122 °F
IP Rating	IP66
IK Rating	IK07

Accessories (order separately)

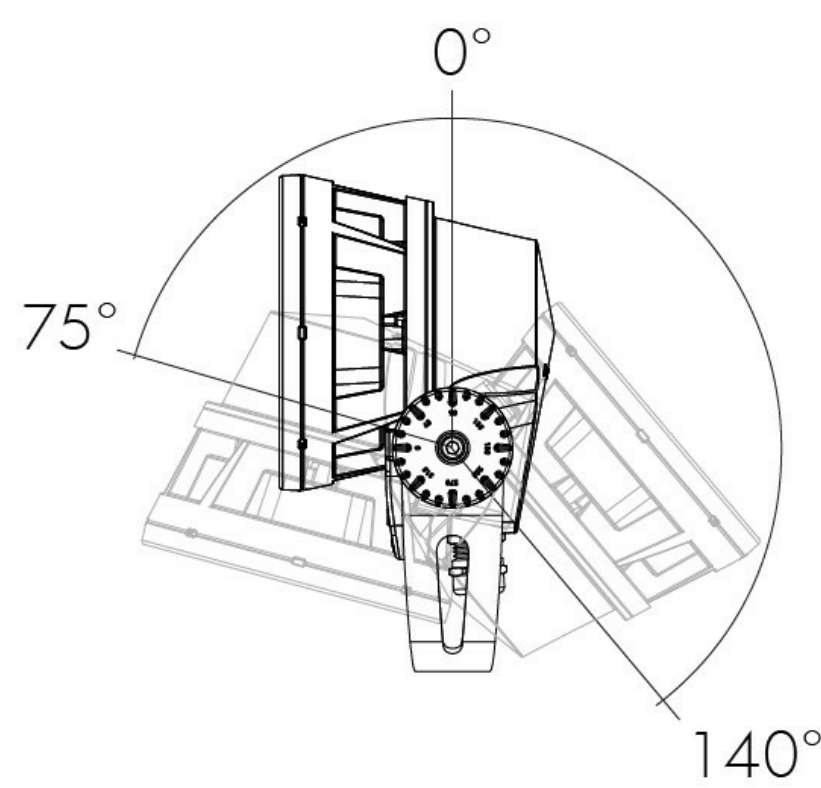
Control Boxes	Power and control box - daisy chain configuration, Power and control box - star configuration, Lumentalk Data Bridge
Control Systems	Lumentouch 2.0™, Lumencue, Lumentone
Diagnostic and Addressing Tools	LumenID, LumentalkID

Mounting details

Mounting hole pattern - standard yoke

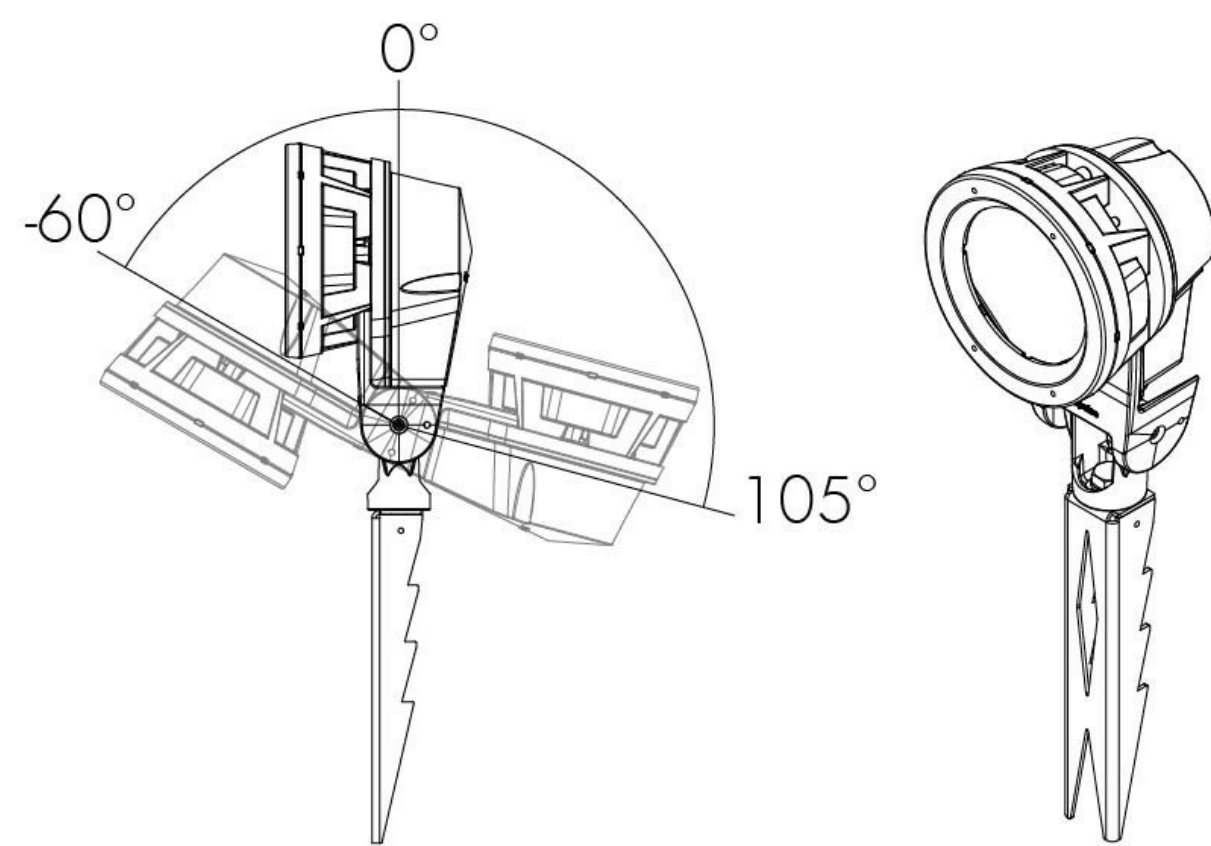
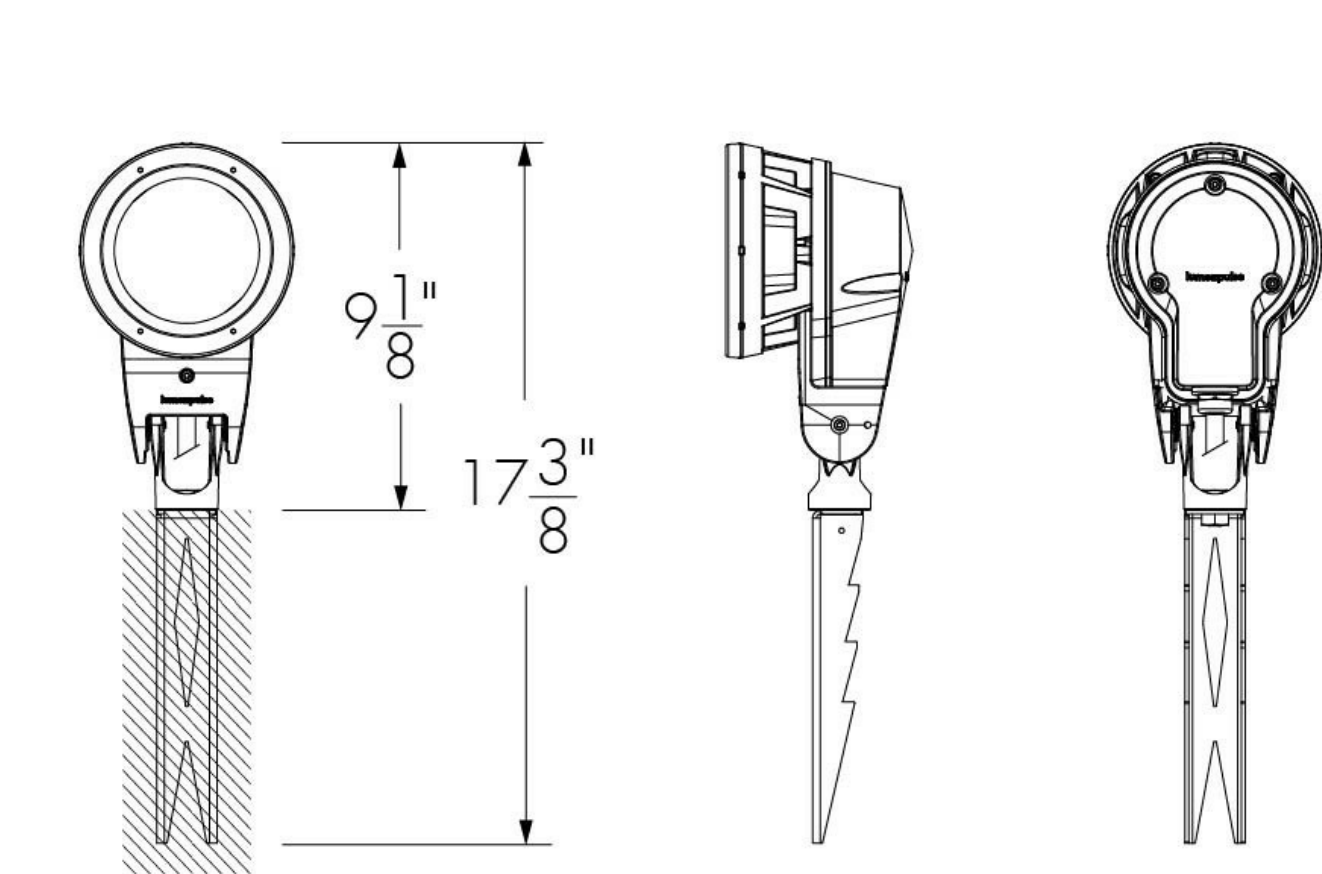


Adjustable pivot limits



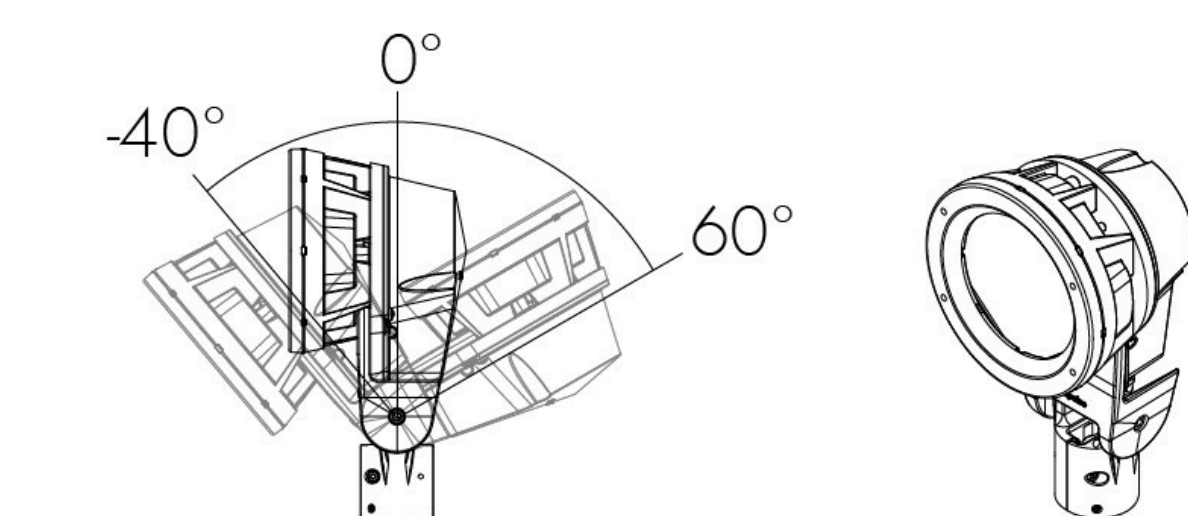
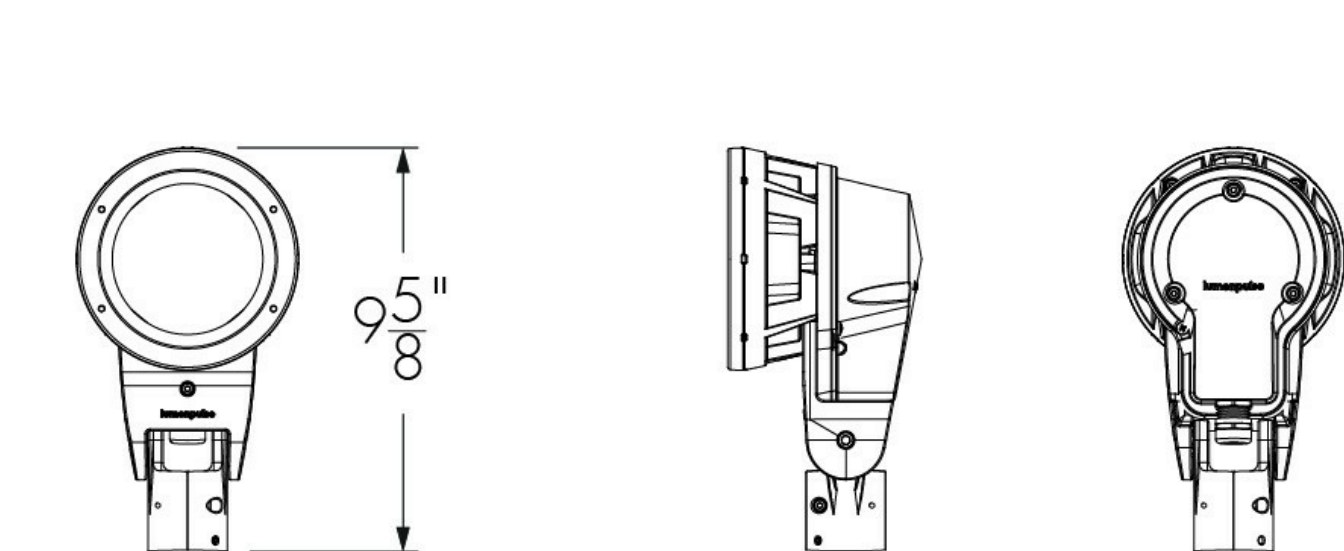
Mounting options

SK - Stake mounting



Adjustable pivot limits

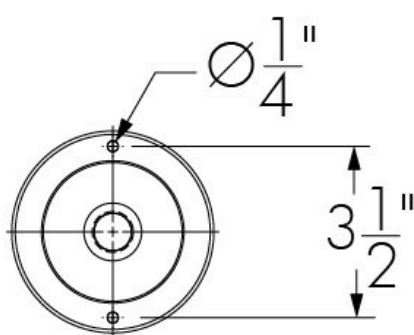
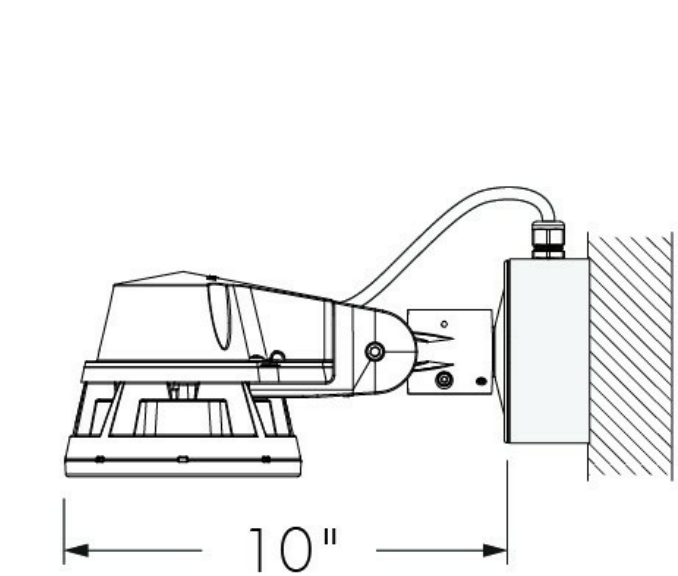
KN - Knuckle mounting



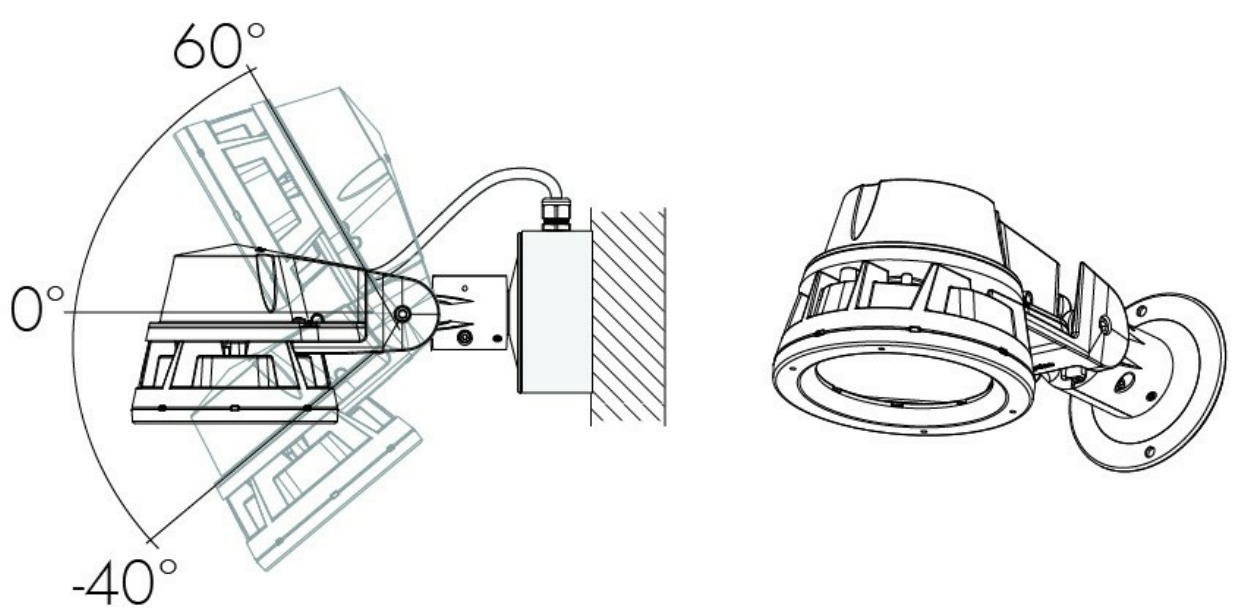
Adjustable pivot limits

Suitable for 1/2 in, 3/4 in, and 1 in pipe diameter

CN - Canopy cover



Mounting hole pattern



Adjustable pivot limits

Suitable for standard round junction boxes, surface mounted

Optical options

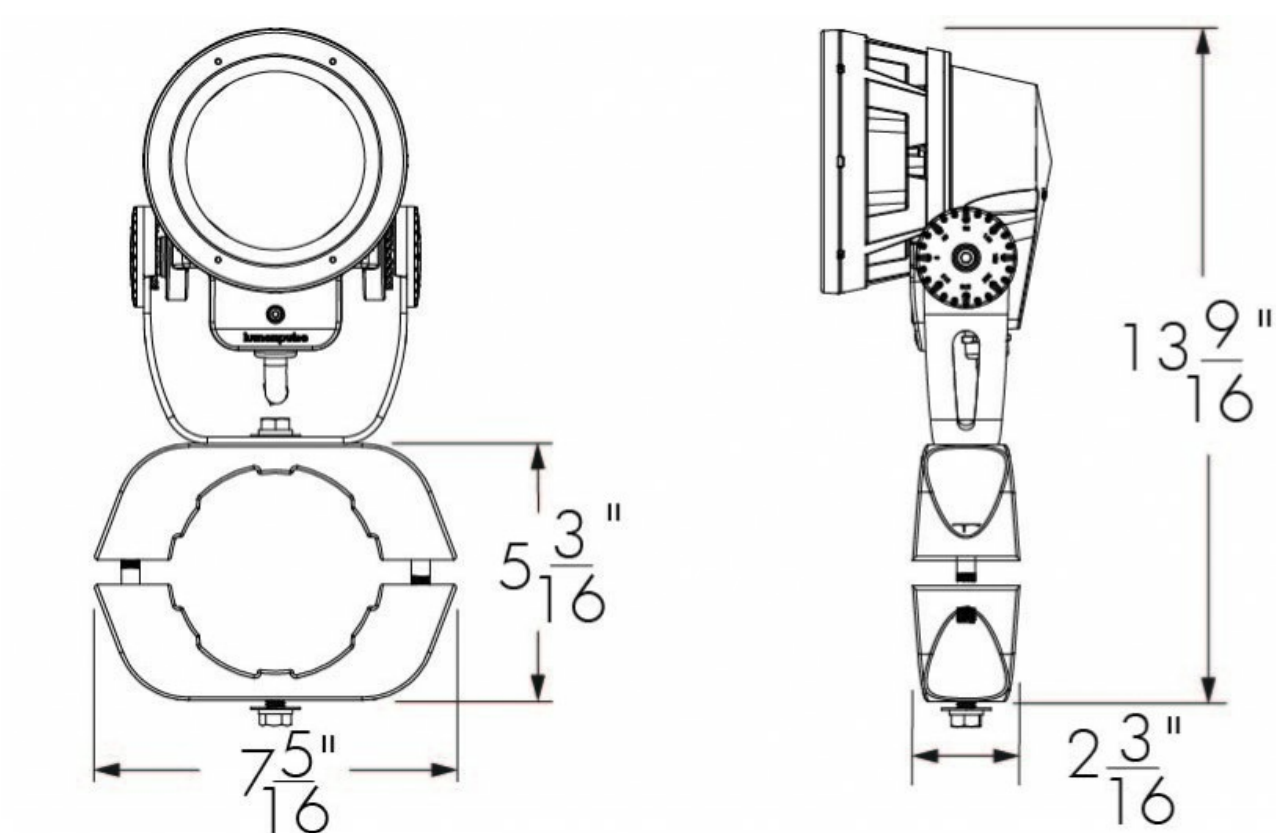
LSLH - Linear spread lens horizontal distribution
LSLV - Linear spread lens vertical distribution



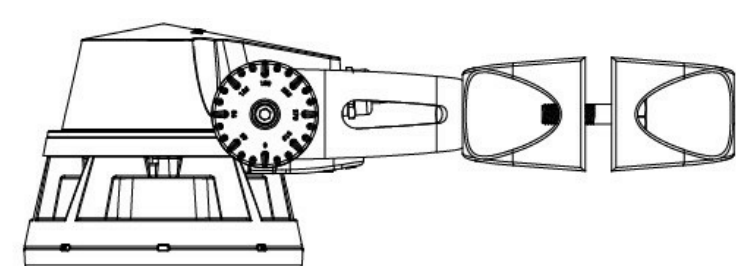
Factory installed, not adjustable on site. Not available for WFL optic.
See 'Optical Accessories' section for field adjustable spread lens (LSLA).

Mounting accessories (order separately)

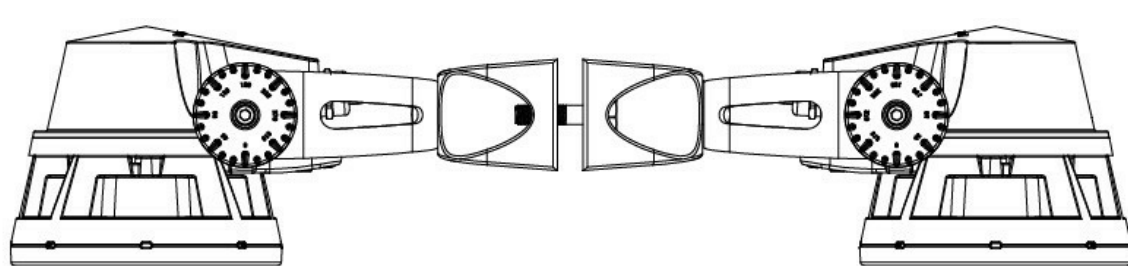
Round pole mounting accessory



PM4 model shown.
Consult factory for square pole section.



PM4-1, PM4.5-1, PM5-1 - Round pole mounting accessory - single fixture

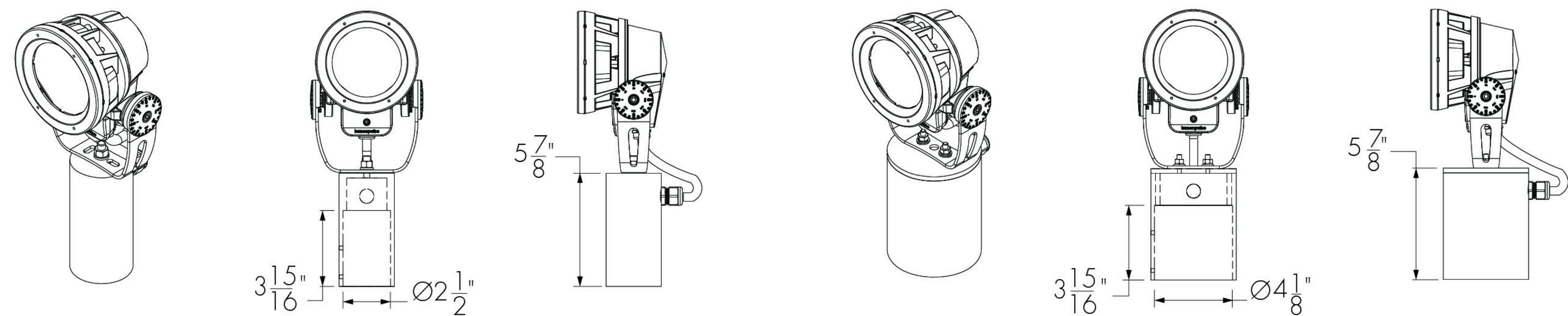


PM4-2, PM4.5-2, PM5-2 - Round pole mounting accessory - twin fixtures
*One bracket assembly is supplied per 2 fixtures unless otherwise specified.

	PM4	PM4.5	PM5
For pole Ø	4" ± 1/16	4.5" ± 1/16	5" ± 1/16

Consult factory for other pole diameters.

Tenon adapter



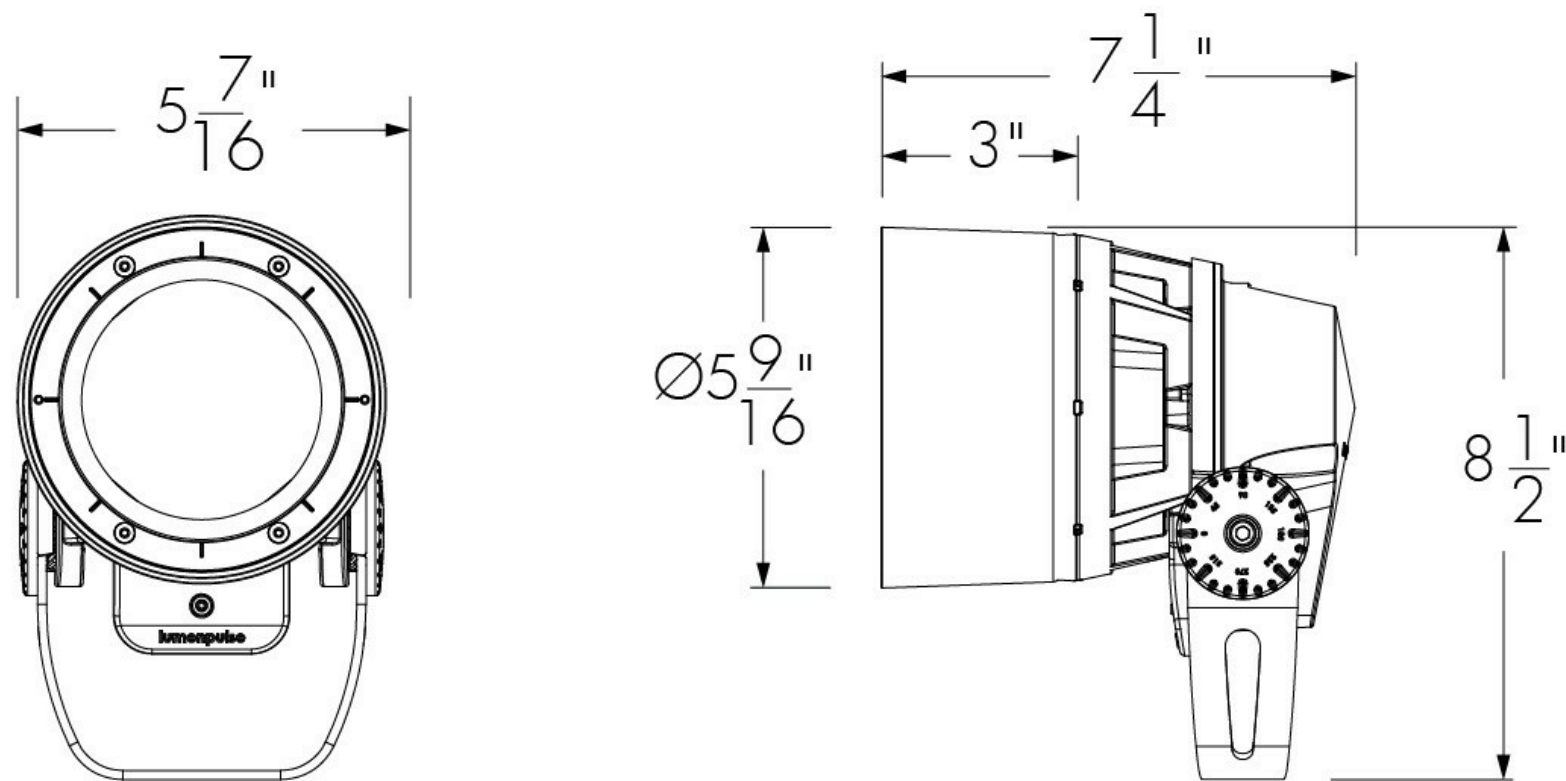
TN2 - Tenon adapter to fit on 2 3/8 in O.D. tenon

TN4 - Tenon adapter to fit on 4 in O.D. tenon

Optical accessories (order separately)

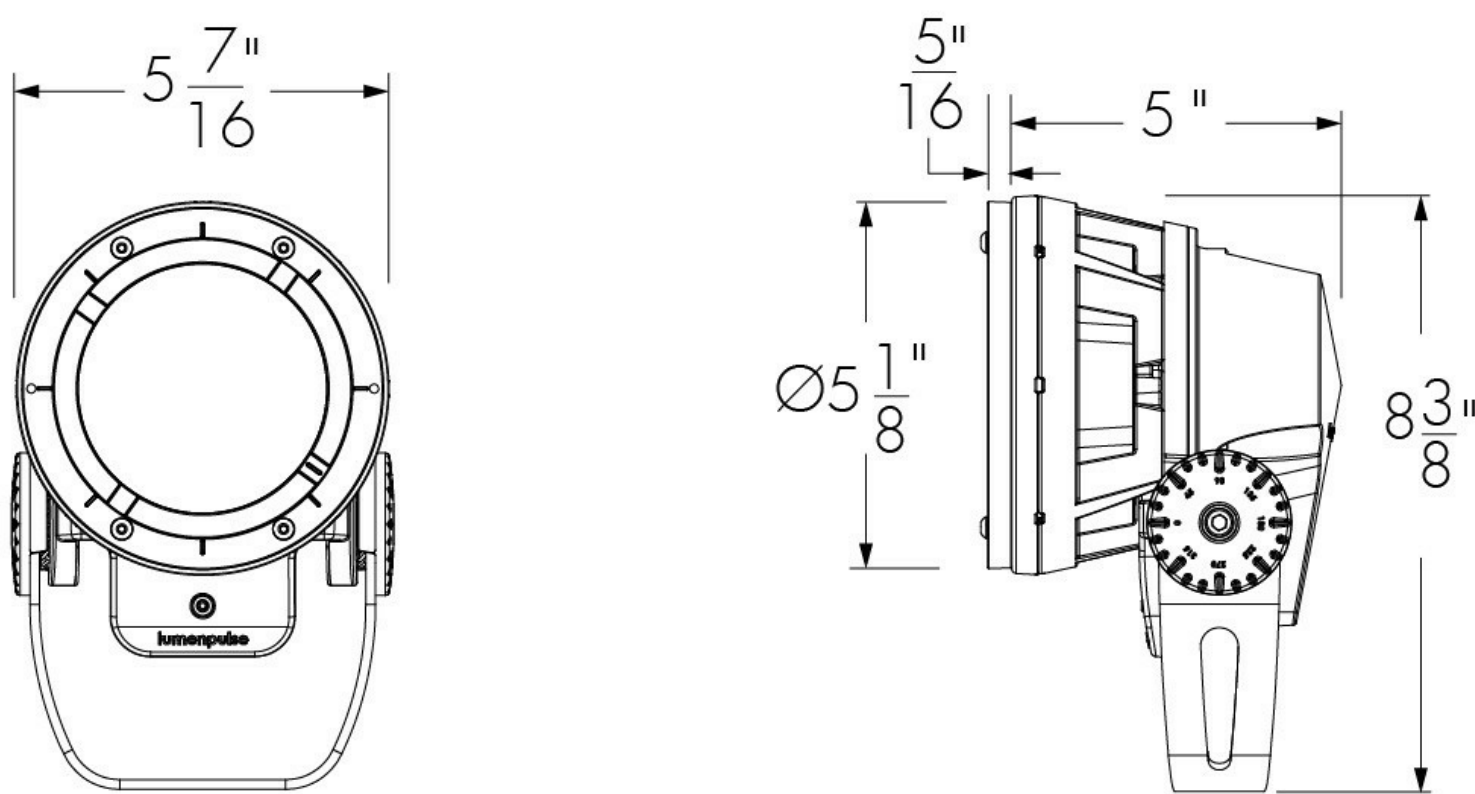
Installed optical accessories will affect the maximum pivot limits for each mounting option, consult factory for details.

SN - Snoot



LBSSN-FINISH-BK
Interior surface painted black. Please specify desired exterior FINISH from list of available finishes.

LSLA - Linear spread lens adjustable



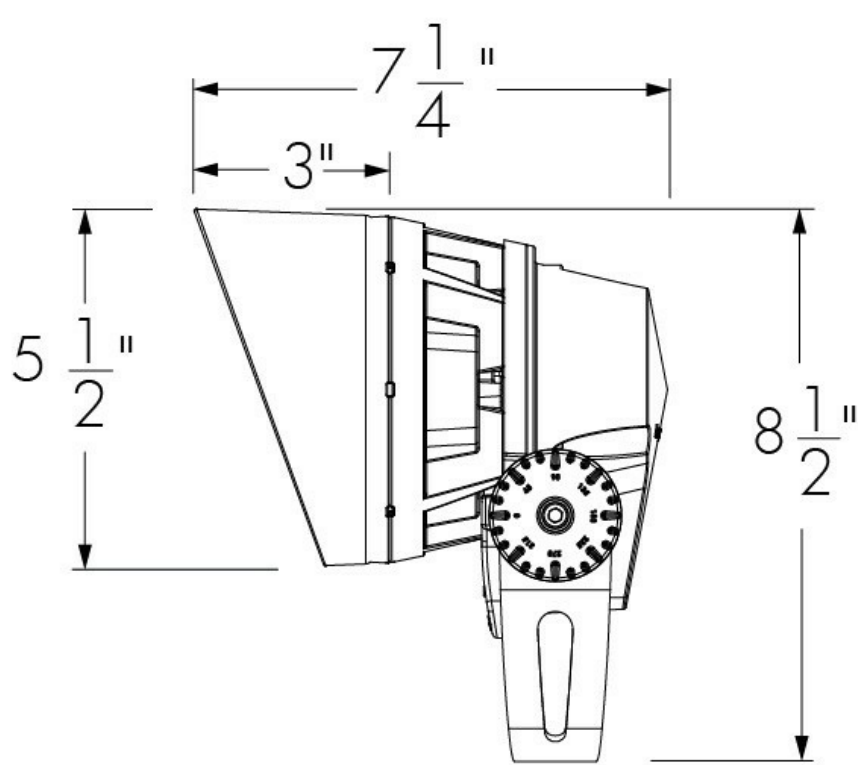
LBSLSLA-FINISH
Please specify desired exterior FINISH from list of available finishes.

Accessory combinations

+	Snoot	Visor
Linear spread lens adjustable	YES	YES
Wire guard	YES	YES

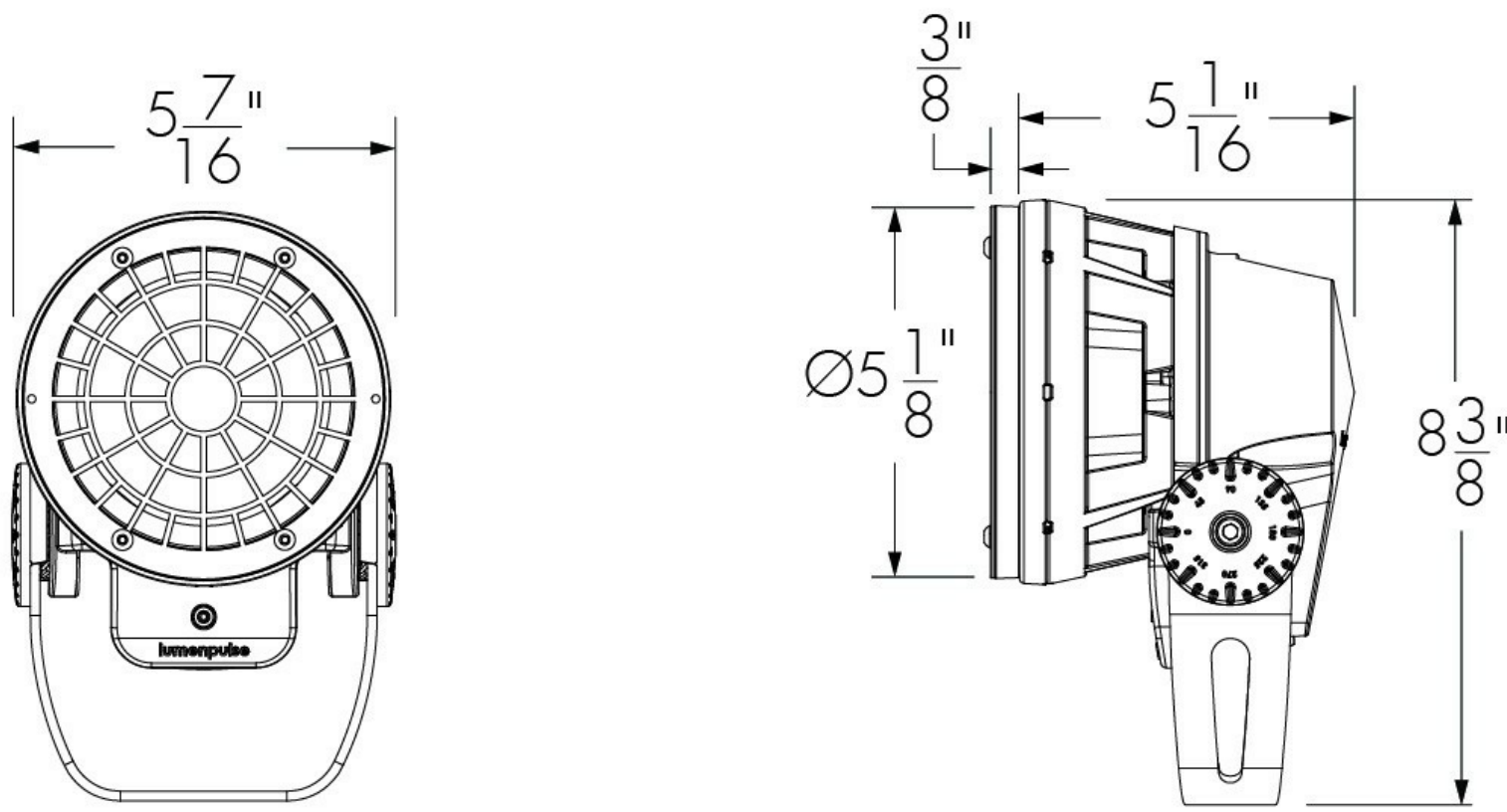
Accessory combinations must be ordered together on a single line.
Ex: A snoot + wire guard combination order code is LBSSNWG-BK-BK.

VS - Visor



LBSVS-FINISH-BK
Interior surface painted black. Please specify desired exterior FINISH from list of available finishes.

WG - Wire guard



LBSWG-FINISH
Please specify desired exterior FINISH from list of available finishes.

Available exterior finishes for optical accessories

- BK - Black Sandtex®
- BRZ - Bronze Sandtex®
- SI - Silver Sandtex®
- WH - Smooth white
- BKTX - Textured black
- BRZTX - Textured bronze, non-metallic
- GRATX - Textured medium gray
- GRNTX - Textured green
- WHTX - Textured white
- CC - Custom color and finish (please specify RAL color)*

*Lumenpulse offers a wide selection of RAL CLASSIC (K7) colors with a smooth texture and high-gloss finish. Please consult factory for a list of available K7 colors, other RAL textures and glosses, or to match alternate color charts. Final color matching results may vary.

How to order

1	2	3	4	5	6	7	8
LBS							
9	10	11					

1 . Housing

LBS	Lumenbeam™ Small
-----	------------------

3 . Color and Color Temperature ⁽¹⁾

22K	2200K
27K	2700K
30K	3000K
35K	3500K
40K	4000K
57K	5700K
RD	Red
GR	Green
BL	Blue

7 . Control ⁽⁴⁾ ⁽⁵⁾

NO	On/Off control
DIM	0-10V dimming
DALI	DALI dimming
DMX/RDM	DMX/RDM enabled

2 . Voltage

100	100 volts
120	120 volts
208	208 volts
220	220 volts
240	240 volts
277	277 volts

4 . Optics

VN	Very Narrow 6°
NS	Narrow Spot 10°
NF	Narrow Flood 20°
FL	Flood 40°
WFL	Wide Flood 60°

5 . Optical Option

LSLH	Linear spread lens horizontal distribution ⁽²⁾
LSLV	Linear spread lens vertical distribution ⁽²⁾

6 . Finish

BK	Black Sandtex®
BRZ	Bronze Sandtex®
SI	Silver Sandtex®
WH	Smooth white
BKTX	Textured black
BRZTX	Textured bronze non-metallic
GRATX	Textured medium gray
GRNTX	Textured green
WHTX	Textured white
CC	Custom color and finish (please specify RAL color) ⁽³⁾

8 . Mounting Option ⁽⁶⁾

SK	Stake Mounting
KN	Knuckle Mounting
CN	Canopy Cover Mounting

9 . Options

3GV	3G ANSI C136.31 Vibration Rating for bridge applications ⁽⁷⁾
CRC	Corrosion-resistant coating for hostile environments ⁽⁸⁾

10 . Certification

UL	UL compliant
CE	CE compliant

11 . Cable Length ⁽⁹⁾

3FT	3 ft ⁽⁹⁾ ⁽¹⁰⁾
10FT	10 ft
20FT	20 ft
30FT	30 ft
50FT	50 ft
70FT	70 ft
100FT	100 ft

Notes:

- ⁽¹⁾ Consult factory for availability of static Royal Blue, 6500K and 90+ CRI.
- ⁽²⁾ Factory installed, not available for 60° optic. Field adjustable spread lens optical accessory available, order separately.
- ⁽³⁾ Lumenpulse offers a wide selection of RAL CLASSIC (K7) colors with a smooth texture and high-gloss finish. Please consult factory for a list of available K7 colors, other RAL textures and glosses, or to match alternate color charts. Final color matching results may vary.
- ⁽⁴⁾ Lumentalk system is enabled with LDB accessory, DIM or DMX/RDM must be specified in the order code. See the typical wiring diagrams in the specification sheet for details.
- ⁽⁵⁾ A Lumentranslator and LumentalkID (LIDLT) must be specified for Lumentalk applications. Consult Lumentranslator and Lumentalk pages and specification sheets for details.
- ⁽⁶⁾ The standard yoke is provided unless an alternate mounting option is specified as part of the order code.
- ⁽⁷⁾ 3GV option is available for standard yoke mounting only.
- ⁽⁸⁾ Use only when exposed to salt spray and harsh chemicals. This option is not required for normal outdoor exposure.
- ⁽⁹⁾ 3 ft cable length is standard unless otherwise specified.
- ⁽¹⁰⁾ Maximum of 3 ft cable length for daisy chain DMX applications with CBX-DS.